

MONTHLY MEMBERSHIP PROGRESS REPORT

LOCATION PAKISTAN

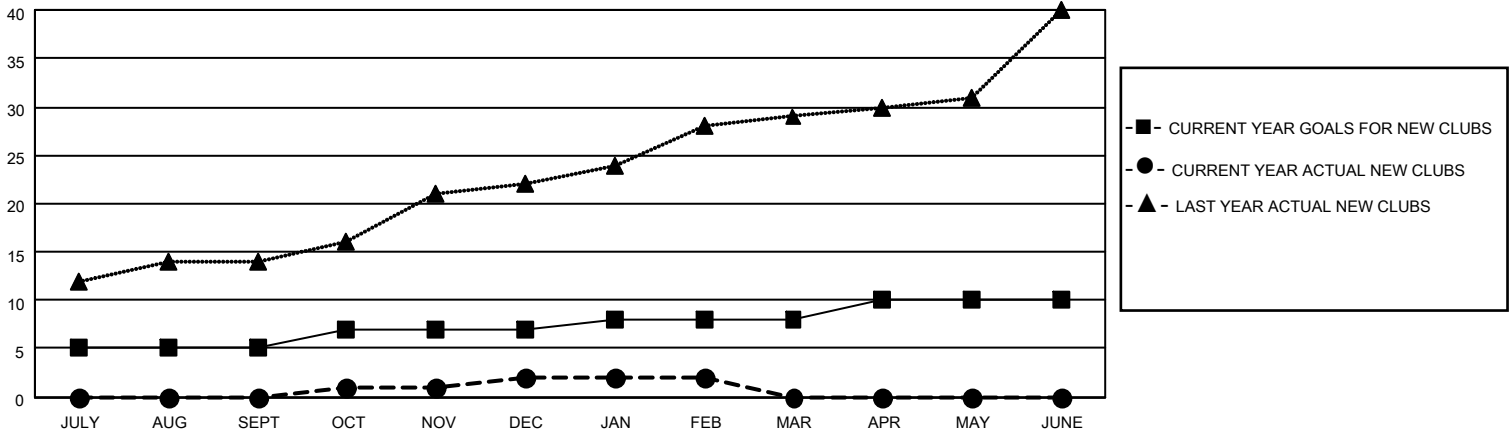
District 305 N1

Results as of: 2/28/2023

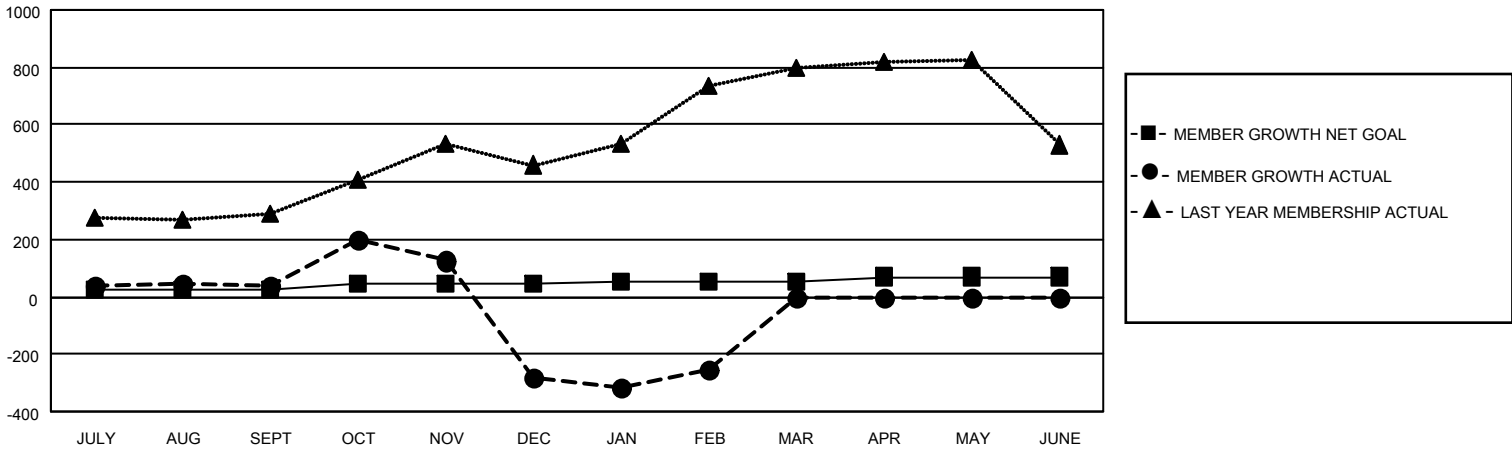
Clubs			
RESULTS FOR 2022-2023			
QUARTER	NEW CLUB GOAL	NEW CLUBS	DROPPED CLUBS
JULY/AUG/SEPT	5	0	2
OCT/NOV/DEC	2	2	11
JAN/FEB/MAR	1	0	2
APR/MAY/JUNE	2	0	0

Members			
RESULTS FOR 2022-2023			
QUARTER	MEMBER GROWTH NET GOAL	MEMBER GROWTH ACTUAL	DROPPED MEMBERS ACTUAL (including transfers)
JULY/AUG/SEPT	25	153	112
OCT/NOV/DEC	20	260	569
JAN/FEB/MAR	10	120	67
APR/MAY/JUNE	15	0	0

GOALS AND ACTUAL NEW CLUBS CUMULATIVE



GOALS AND ACTUAL MEMBERS CUMULATIVE



DROPPED CLUBS: 15

63 CLUBS OF 148 ADDED 1 OR MORE NEW MEMBERS

GENDER DISTRIBUTION

MALE	2,532 (78.44%)
FEMALE	696 (21.56%)
NON BINARY	0 (0.00%)
PREFER NOT TO ANSWER	0 (0.00%)

DROPPED MEMBERS

[CLICK HERE FOR CUMULATIVE MEMBERSHIP DATA](#)

DECEASED	0
CLUB CANCELLED	227
OTHER	521
TOTAL	748

TOTAL FAMILY UNIT MEMBERS 2,422

FAMILY MEMBERS PAYING HALF DUES 1,812